

4332620000179

选型举例: ordering information

LK18- C□ - □□ - □□-WP

d2轴径: d2Bore

d1轴径: d1Bore

外径尺寸: Outside Diam

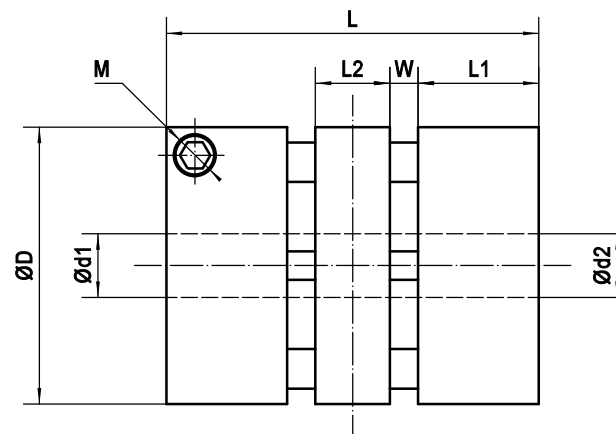
Example: LK18-C26-0503-WP

LK18——系列号, 材料为铝合金

C26——外径尺寸: 26mm, 夹紧螺丝固定

5——d1: 5mm

3——d2: 3mm



型号: LK18-C26-086.35-WP

Specifications

型号Model	额定扭矩 Rated Torque (N.m)	最大扭矩 Max. Torque (N.m)	最高转速 Max. Speed (rpm)	惯性力矩 Moment of Inertia (g.cm ²)	静态扭矩刚性 Static Torsional Stiffness (N.m/rad)	容许径向偏差 Errors of Eccentricity (mm)	容许角向偏差 Errors of Angularity (°)	容许轴向偏差 Error of Shaft End-paly (mm)	重量 Mass (g)
LK18-C26-□□□□-WP	1.4	2.8	10000	0.313	950	0.15	1.5	±0.4	37.1
LK18-C34-□□□□-WP	2.8	5.6	10000	1.13	1960	0.18	1.5	±0.4	78

Dimensions

unit:mm

型号 Model	Φd1 Φd2最大孔径 Max. Bore	ΦD	L	W	L1	L2	M	拧紧力矩 Wrench Torque (N.m)
LK18-C26-□□□□-WP	10	26	35	2.8	11.35	7	M3	1.2
LK18-C34-□□□□-WP	14	34	45	3.6	14.5	8.8	M4	2.5

Unit: mm

第一角画法

FIRST ANGLE METHOD

未注线性与角度尺寸公差

Tolerances for linear and angular dimensions without

individual tolerance indications

GB/T 1804-m eqv ISO 2768-1: m

未注形状与位置尺寸公差

Geometrical tolerance for features without

individual tolerance indications

GB/T 1184-K eqv ISO 2768-2: K

批准 Approve

标准化 Standard

工艺 Technology

审核 Check

设计 Design

段伟

2020.05.20

MOONS'

COUPLING 联轴器

Shanghai Moons' Electric Co., Ltd.

This document is released for information only. Its reproduction in whole or in part or its dissemination to third parties is prohibited. All trademarks and registered trademarks appearing on this document are the property of their respective owners.

原始版本 Original revision

REV. 版本记录 REVISION RECORD

DATE

UNLESS OTHERWISE SPECIFIED

NAMES

SIGNATURE

DATE

LK18-C26-086.35-WP

REV.A

SCALE 1:1

Sheet 1 of 1

1

2

3

4

5

6

7

8